

Botany Bay LGA

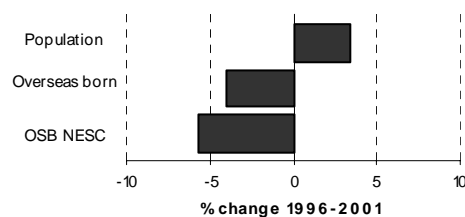
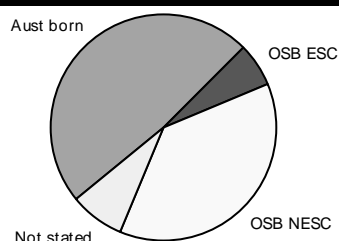


Table 3.8.1

Summary Indicators	2001 Census	% of population	1996 Census	Change 1996-2001	% change
Population	35,476	100.0	34,286	1,190	3.5
Australian born	17,341	48.9	17,167	174	1.0
Overseas born	15,344	43.3	15,991	-647	-4.0
Birthplace not stated	2,791	7.9	1,129	1,662	147.2
Overseas born - English speaking countries	2,130	6.0	1,977	153	7.7
Overseas born - non-English speaking countries	13,214	37.2	14,014	-800	-5.7
Aboriginal and/or Torres Strait Islanders	554	1.6	500	54	10.8
Language other than English spoken at home	16,226	45.7	16,938	-712	-4.2
Overseas born arrived since 1996	3,010	8.5			
Overseas born arrived since 1996 from NESC	2,631	7.4			

Table 3.8.2

Overseas Born: Birthplace by Gender, 2001 and 1996 Census

Birthplace	Males	Females	Persons	% of OSB	1996 Census	Change 1996-2001	% change
Greece	520	572	1,092	7.1	1,243	-151	-12.1
Bangladesh	616	427	1,043	6.8	560	483	86.3
New Zealand	472	380	852	5.6	702	150	21.4
Indonesia	397	442	839	5.5	701	138	19.7
England	400	369	769	5.0	779	-10	-1.3
Philippines	290	471	761	5.0	919	-158	-17.2
China (excl. SARs and Taiwan)	350	396	746	4.9	798	-52	-6.5
Egypt	276	307	583	3.8	794	-211	-26.6
Turkey	250	234	484	3.2	527	-43	-8.2
Chile	237	237	474	3.1	581	-107	-18.4
Italy	228	223	451	2.9	515	-64	-12.4
Iraq	217	177	394	2.6	447	-53	-11.9
Fiji	133	159	292	1.9	404	-112	-27.7
Malta	147	144	291	1.9	342	-51	-14.9
India	145	129	274	1.8	253	21	8.3
Hong Kong (SAR of China)	127	137	264	1.7	286	-22	-7.7
Lebanon	127	124	251	1.6	338	-87	-25.7
Cyprus	121	119	240	1.6	263	-23	-8.7
Croatia	114	122	236	1.5	283	-47	-16.6
Yugoslavia, Federal Republic of	118	109	227	1.5	n.c.	n.c.	n.c.
Malaysia	113	107	220	1.4	249	-29	-11.6
Viet Nam	92	111	203	1.3	250	-47	-18.8
Uruguay	88	106	194	1.3	243	-49	-20.2
Scotland	89	88	177	1.2	201	-24	-11.9
Portugal	84	82	166	1.1	195	-29	-14.9
Tonga	83	68	151	1.0	184	-33	-17.9
Russian Federation	64	86	150	1.0	94	56	59.6
East Timor	75	71	146	1.0	n.c.	n.c.	n.c.
Argentina	64	74	138	0.9	207	-69	-33.3
Ukraine	63	73	136	0.9	61	75	123.0
Other birthplaces	1,552	1,548	3,100	20.2	n.c.	n.c.	n.c.
Total overseas born	7,652	7,692	15,344	100.0	15,991	-647	-4.0

Botany Bay LGA

(continued)

Table 3.8.3

Birthplace by Age: Selected Birthplace Groups, 2001 Census

Percentage in age group of each birthplace - total expressed as a number

Birthplace	Age 0-12	Age 13-24	Age 25-54	Age 55-64	Age 65+	Total
Greece	1.4	1.5	29.1	37.1	31.0	1,092
Bangladesh	11.4	17.4	68.6	1.7	1.0	1,043
New Zealand	10.9	18.0	59.6	7.3	4.2	852
Indonesia	6.6	21.7	64.6	4.4	2.7	839
England	2.6	4.2	56.7	14.4	22.1	769
Philippines	5.9	17.9	63.7	7.2	5.3	761
China (excl. SARs and Taiwan)	4.3	13.5	57.0	10.6	14.6	746
Egypt	1.5	3.3	32.4	22.8	40.0	583
Turkey	3.9	9.5	67.8	13.8	5.0	484
Chile	1.7	11.8	58.6	20.9	7.0	474

Table 3.8.4

Languages other than English Spoken at Home by Gender, 2001 and 1996 Census

Language	Males	Females	Persons	% of LOTE speakers	1996	Change	% change
					Census	1996-2001	
Greek	1,313	1,338	2,651	16.3	2,912	-261	-9.0
Spanish	770	861	1,631	10.1	1,900	-269	-14.2
Bengali	691	533	1,224	7.5	606	618	102.0
Cantonese	513	565	1,078	6.6	1,051	27	2.6
Arabic	483	501	984	6.1	1,158	-174	-15.0
Indonesian	436	450	886	5.5	564	322	57.1
Italian	383	438	821	5.1	910	-89	-9.8
Turkish	407	364	771	4.8	758	13	1.7
Tagalog (Filipino)	264	381	645	4.0	790	-145	-18.4
Mandarin	277	296	573	3.5	530	43	8.1
Assyrian	221	180	401	2.5	478	-77	-16.1
Russian	172	191	363	2.2	224	139	62.1
Croatian	181	169	350	2.2	424	-74	-17.5
Portuguese	150	167	317	2.0	334	-17	-5.1
Maltese	125	143	268	1.7	321	-53	-16.5
Serbian	133	124	257	1.6	251	6	2.4
Hindi	116	140	256	1.6	297	-41	-13.8
Tongan	102	102	204	1.3	243	-39	-16.0
Vietnamese	85	94	179	1.1	240	-61	-25.4
Persian	90	75	165	1.0	265	-100	-37.7
Macedonian	66	69	135	0.8	179	-44	-24.6
Urdu	73	53	126	0.8	117	9	7.7
Polish	57	61	118	0.7	146	-28	-19.2
Hungarian	49	58	107	0.7	94	13	13.8
Armenian	48	55	103	0.6	131	-28	-21.4
German	50	43	93	0.6	104	-11	-10.6
French	43	43	86	0.5	126	-40	-31.7
Sinhalese	41	40	81	0.5	112	-31	-27.7
Thai	31	50	81	0.5	53	28	52.8
Korean	36	44	80	0.5	109	-29	-26.6
Other languages	587	605	1,192	7.3	1,511	-319	-21.1
Total LOTE speakers	7,993	8,233	16,226	100.0	16,938	-712	-4.2

Botany Bay LGA

(continued)

Table 3.8.5

English Language Competency by Age: Selected Language Groups, 2001 Census

Language	Age 0-12	Age 13-24	Age 25-54	Age 55-64	Age 65+	Total
Greek						
Speak English well/very well	187	313	987	313	248	2,048
Speak English not well/not at all	29	..	103	180	247	559
Total including not stated	227	318	1,108	496	501	2,650
<i>Percent not well/not at all</i>	<i>12.8</i>		<i>9.3</i>	<i>36.3</i>	<i>49.3</i>	<i>21.1</i>
Spanish						
Speak English well/very well	108	315	630	173	56	1,282
Speak English not well/not at all	23	..	103	93	90	316
Total including not stated	141	331	740	270	149	1,631
<i>Percent not well/not at all</i>	<i>16.3</i>		<i>13.9</i>	<i>34.4</i>	<i>60.4</i>	<i>19.4</i>
Bengali						
Speak English well/very well	186	190	652	12	..	1,046
Speak English not well/not at all	83	13	54	157
Total including not stated	279	207	713	16	..	1,224
<i>Percent not well/not at all</i>	<i>29.7</i>	<i>6.3</i>	<i>7.6</i>			<i>12.8</i>
Cantonese						
Speak English well/very well	112	210	345	26	17	710
Speak English not well/not at all	28	..	166	60	92	354
Total including not stated	145	218	514	86	112	1,075
<i>Percent not well/not at all</i>	<i>19.3</i>		<i>32.3</i>	<i>69.8</i>	<i>82.1</i>	<i>32.9</i>
Arabic						
Speak English well/very well	111	173	391	99	74	848
Speak English not well/not at all	13	..	37	26	41	124
Total including not stated	127	183	433	125	118	986
<i>Percent not well/not at all</i>	<i>10.2</i>		<i>8.5</i>	<i>20.8</i>	<i>34.7</i>	<i>12.6</i>
Indonesian						
Speak English well/very well	99	186	406	21	..	716
Speak English not well/not at all	47	..	81	12	..	157
Total including not stated	152	197	493	33	13	888
<i>Percent not well/not at all</i>	<i>30.9</i>		<i>16.4</i>	<i>36.4</i>		<i>17.7</i>
All speakers of languages other than English						
Speak English well/very well	1,589	2,546	6,669	1,158	977	12,939
Speak English not well/not at all	423	109	1,004	642	831	3,009
Total including not stated	2,127	2,691	7,778	1,813	1,831	16,240
<i>Percent not well/not at all</i>	<i>19.9</i>	<i>4.1</i>	<i>12.9</i>	<i>35.4</i>	<i>45.4</i>	<i>18.5</i>

Table 3.8.6

Ancestry by Birthplace of Parents: Selected Ancestry Groups, 2001 Census

Ancestry	Australian Born					Overseas born	Not stated birthplace	Total responses
	Both parents born in Australia		Both parents born overseas		Parent(s) birthplace not stated			
	Mother Aust born/Father born	Aust OSB	Father Aust born/Mother OSB	Aust OSB				
Australian	4,918	657	431	243	177	144	242	6,812
English	3,198	592	324	397	170	1,209	160	6,050
Greek	288	212	84	932	51	1,460	101	3,128
Chinese	40	24	36	434	34	1,992	56	2,616
Irish	1,538	185	113	114	43	340	57	2,390
Italian	215	113	54	396	12	648	47	1,485
Filipino	..	10	29	132	14	702	49	943
Turkish	..	17	..	281	15	453	30	806
Spanish	14	16	..	148	..	532	24	742
Maltese	53	63	33	180	..	322	17	672

Botany Bay LGA

(continued)

Table 3.8.7

Religious Affiliation by Gender, 2001 and 1996 Census

Religion	Males	Females	Persons	% of population	1996 Census	Change 1996-2001	% change
Catholic	5,917	6,553	12,470	35.2	12,942	-472	-3.6
Anglican	2,257	2,421	4,678	13.2	4,839	-161	-3.3
Orthodox	1,928	1,982	3,910	11.0	4,011	-101	-2.5
Islam	1,612	1,340	2,952	8.3	2,269	683	30.1
No Religion	1,475	1,167	2,642	7.4	3,052	-410	-13.4
Buddhism	475	519	994	2.8	649	345	53.2
Uniting Church	386	421	807	2.3	898	-91	-10.1
Presbyterian & Reformed	350	412	762	2.1	750	12	1.6
Oriental Christian	249	245	494	1.4	646	-152	-23.5
Hinduism	222	228	450	1.3	375	75	20.0
Baptist	147	169	316	0.9	289	27	9.3
Judaism	132	148	280	0.8	235	45	19.1
Christian, nfd	129	145	274	0.8	184	90	48.9
Religious belief, nfd	143	127	270	0.8	62	208	335.5
Pentecostal	113	131	244	0.7	148	96	64.9
Latter Day Saints	91	89	180	0.5	172	8	4.7
Other Protestant	62	58	120	0.3	121	-1	-0.8
Jehovah's Witnesses	44	58	102	0.3	128	-26	-20.3
Lutheran	61	40	101	0.3	104	-3	-2.9
Seventh-day Adventist	32	27	59	0.2	50	9	18.0
Sikhism	26	26	52	0.1	63	-11	-17.5
Brethren	17	25	42	0.1	22	20	90.9
Other Christian	18	20	38	0.1	30	8	26.7
Churches of Christ	18	15	33	0.1	37	-4	-10.8
Salvation Army	18	11	29	0.1	34	-5	-14.7
Nature Religions	7	13	20	0.1	..		
Baha'i	8	7	15	0.0	23	-8	-34.8
Druse	7	4	11	0.0	21	-10	-47.6
Other religions	24	16	40	0.1	41	-1	-2.4
Inadequately described	80	41	121	0.3	20	101	505.0
Not stated	1,496	1,474	2,970	8.4	2,071	899	43.4
Total persons	17,544	17,932	35,476	100.0	34,286	1,190	3.5