

INTERPRETING ASSIGNMENTS PERFORMED: 3 YEAR COMPARISON

LANGUAGE	FINANCIAL YEAR: 2000/2001			FINANCIAL YEAR: 1999/2000			FINANCIAL YEAR 1998/1999		
	TOTAL	RECOUPABLE	NON RECOUPABLE	TOTAL	RECOUPABLE	NON RECOUPABLE	TOTAL	RECOUPABLE	NON RECOUPABLE
ALBANIAN	9	9	0	9	9	0	1	1	0
AMHARIC	14	14	0	16	16	0	16	12	4
ARABIC	2314	1020	1294	2207	1038	1169	2436	1267	1169
ARMENIAN	97	61	36	92	63	29	69	42	27
ASSYRIAN	185	100	85	170	93	77	166	128	38
AUSLAN	488	337	151	676	506	170	548	389	159
BENGALI	61	40	21	48	27	21	61	51	10
BIELORUSSIAN	0	0	0	1	1	0	0	0	0
BOSNIAN	70	51	19	105	73	32	129	100	29
BULGARIAN	17	12	5	9	7	2	2	1	1
BURMESE	44	24	20	35	21	14	16	6	10
CANTONESE	1329	617	712	1300	584	716	1166	586	580
COOK I MAORI	10	4	6	12	5	7	10	4	6
CROATIAN	291	139	152	256	126	130	304	146	158
CZECH	20	7	13	37	14	23	26	15	11
DARI	128	86	42	79	50	29	49	34	15
DUTCH	13	2	11	5	0	5	6	4	2
ESTONIAN	0	0	0	0	0	0	0	0	0
FUJIAN	24	8	16	17	8	9	13	4	9
FILIPINO	96	46	50	136	64	72	118	62	56
FINNISH	13	10	3	5	2	3	4	2	2
FRENCH	58	35	23	43	29	14	60	37	23
GERMAN	28	16	12	55	25	30	40	27	13
GREEK	540	238	302	569	271	298	561	295	266
HAKKA	0	0	0	0	0	0	2	0	2
HEBREW	9	9	0	21	15	6	15	13	2
HINDI	124	74	50	134	89	45	156	79	77
HOKKIEN	6	5	1	7	5	2	2	2	0
HUNGARIAN	101	56	45	91	61	30	62	35	27
INDONESIAN	333	177	156	379	220	159	356	213	143
ITALIAN	393	219	174	397	216	181	390	243	147
JAPANESE	143	103	40	203	160	43	141	102	39
KHMER	264	90	174	323	162	161	288	138	150
KOREAN	663	261	402	729	270	459	671	261	410
KURDJISH	52	29	23	50	24	26	55	27	28

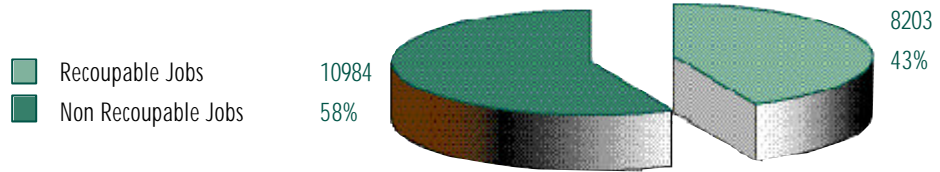


LANGUAGE	FINANCIAL YEAR: 2000/2001			FINANCIAL YEAR: 1999/2000			FINANCIAL YEAR 1998/1999		
	TOTAL	RECOUPABLE	NON RECOUPABLE	TOTAL	RECOUPABLE	NON RECOUPABLE	TOTAL	RECOUPABLE	NON RECOUPABLE
LAO	137	41	96	118	37	81	165	61	104
LITHUANIAN	13	3	10	1	1	0	2	0	2
MACEDONIAN	398	212	186	379	205	174	439	228	211
MALAYSIAN	3	1	2	6	3	3	2	2	0
MALTESE	36	18	18	34	26	8	44	30	14
MANDARIN	1813	726	1087	1598	740	858	1377	528	849
MONITORING*	1043	1	1042	1122	0	1122	966	41	925
NEPALESE	2	2	0	11	7	4	8	2	6
PERSIAN	541	253	288	429	226	203	396	233	163
POLISH	244	126	118	174	77	97	194	102	92
PORTUGUESE	201	115	86	196	107	89	184	86	98
PUKAPUKAN	0	0	0	1	1	0	0	0	0
PUNJABI	110	66	44	92	49	43	82	48	34
PUSHTO	40	27	13	36	32	4	50	44	6
ROMANIAN	37	23	14	38	27	11	54	27	27
RUSSIAN	524	299	225	400	246	154	426	259	167
SAMOAN	253	86	167	279	93	186	219	77	142
SERBIAN	418	195	223	515	279	236	578	356	222
SINHALESE	47	41	6	26	16	10	13	11	2
SLOVAK	5	2	3	8	2	6	10	8	2
SLOVENE	1	1	0	0	0	0	18	4	14
SOMALI	40	24	16	46	28	18	51	36	15
SPANISH	650	243	407	683	287	396	770	342	428
SWEDISH	3	3	0	1	1	0	2	2	0
TAMIL	103	38	65	63	41	22	71	66	5
THAI	176	87	89	203	105	98	135	77	58
TIGRIGNA	0	0	0	1	1	0	3	3	0
TONGAN	299	154	145	198	78	120	208	72	136
TURKISH	549	196	353	514	166	348	535	215	320
UKRAINIAN	9	8	1	7	5	2	3	2	1
URDU	68	36	32	54	32	22	69	41	28
VIETNAMESE	3201	991	2210	3486	1031	2455	3512	1240	2272
TOTAL	18901	7917	10984	18935	8203	10732	18525	8569	9956

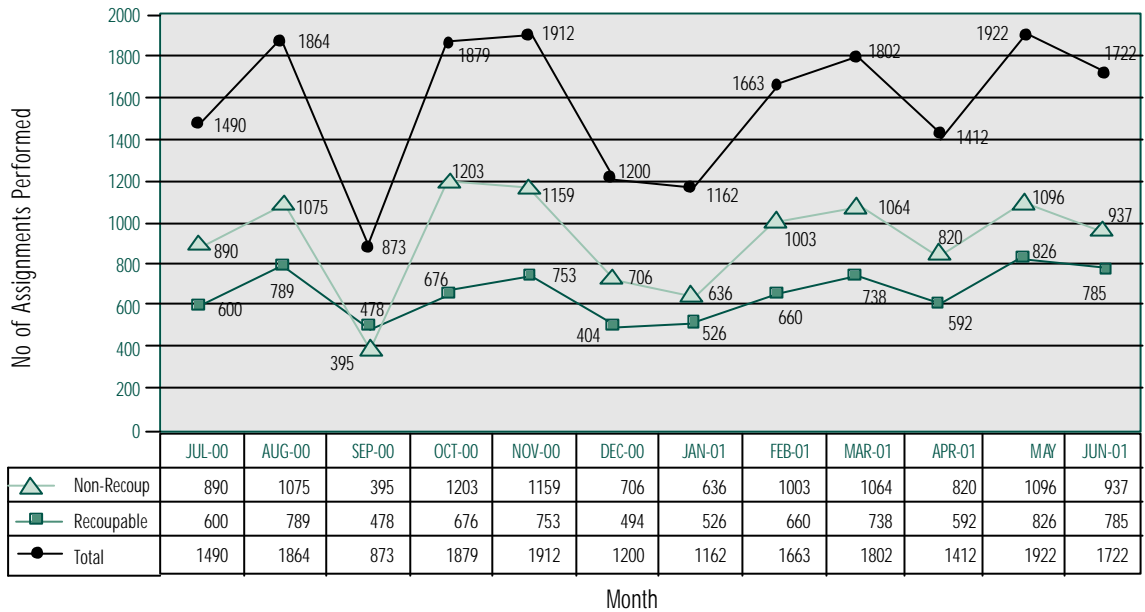
* indicates the number of media monitoring assignments performed



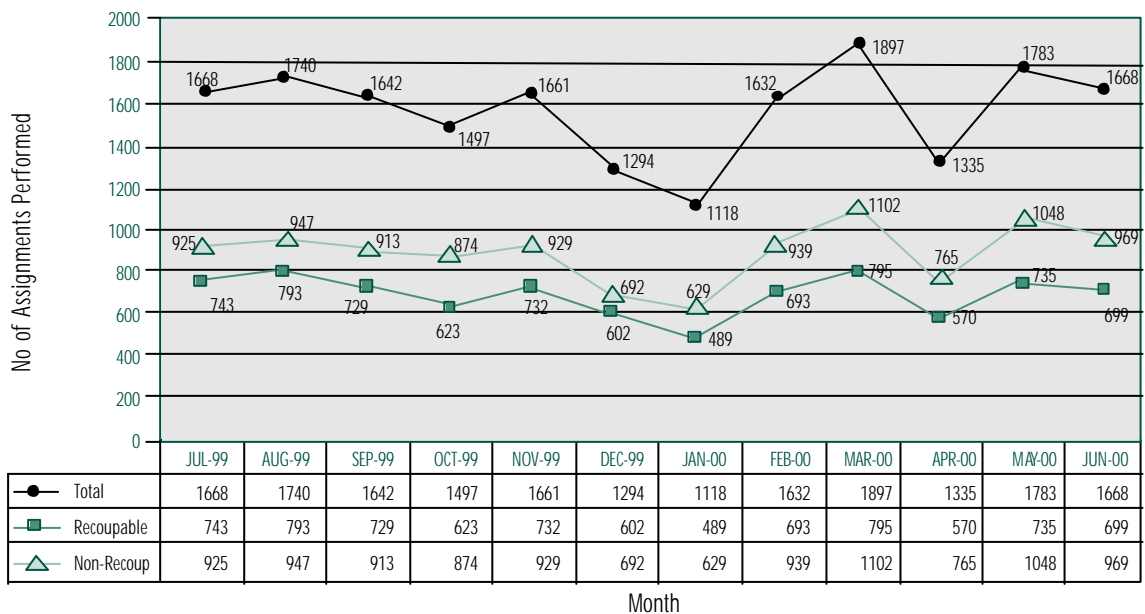
ANALYSIS OF INTERPRETING ASSIGNMENTS PERFORMED YE 30/6/2001 – Total 18,935 Assignments



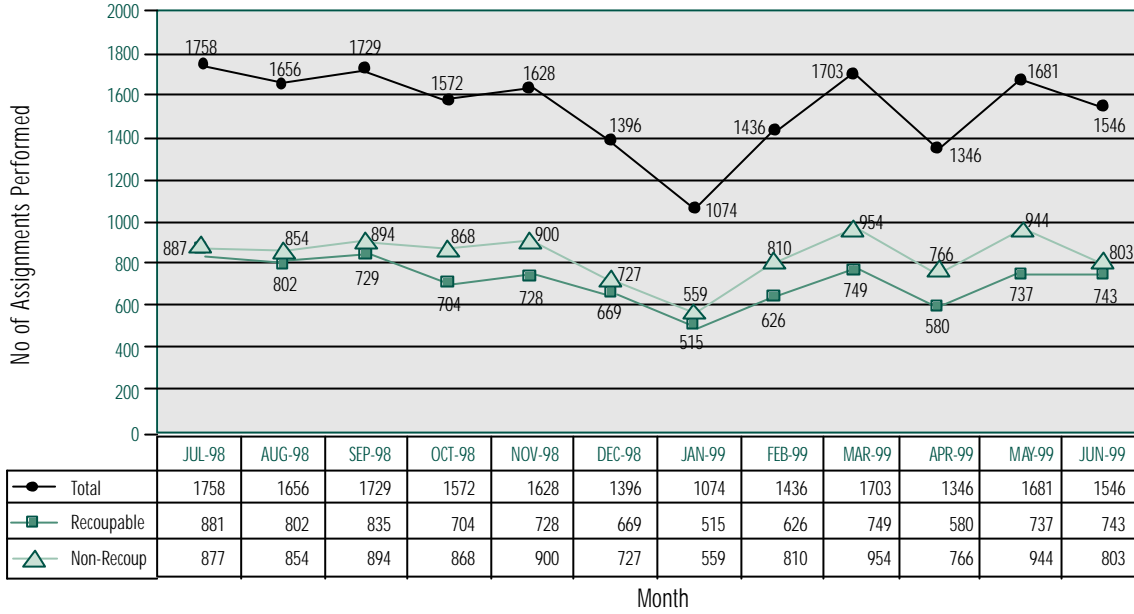
INTERPRETING ASSIGNMENTS PERFORMED YE 30/6/2001 BY MONTH – Total Performed 18,901



INTERPRETING ASSIGNMENTS PERFORMED YE 30/6/2000 BY MONTH – Total Performed 18,935

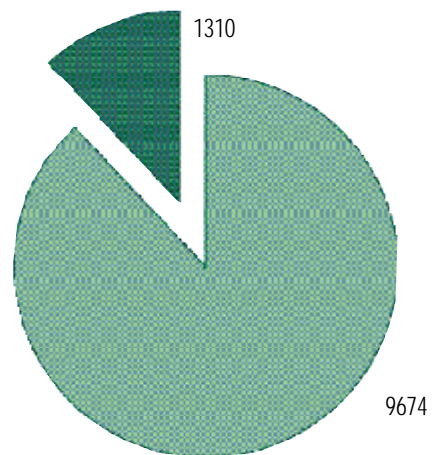
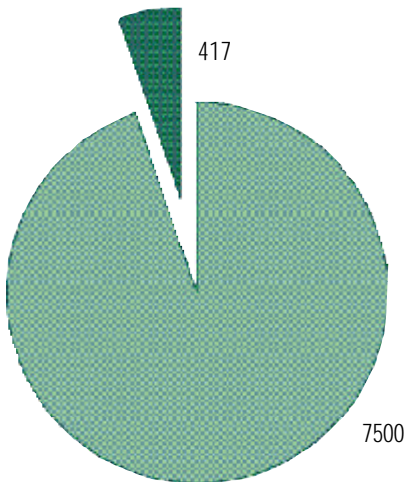


INTERPRETING ASSIGNMENTS PERFORMED YE 30/6/1999 – Total Performed: 18,525



TOTAL RECOUP. INTERPRETING
Assignments Performed YE 30/6/2001

TOTAL NON RECOUP. INTERPRETING
Assignments Performed YE 30/6/2001



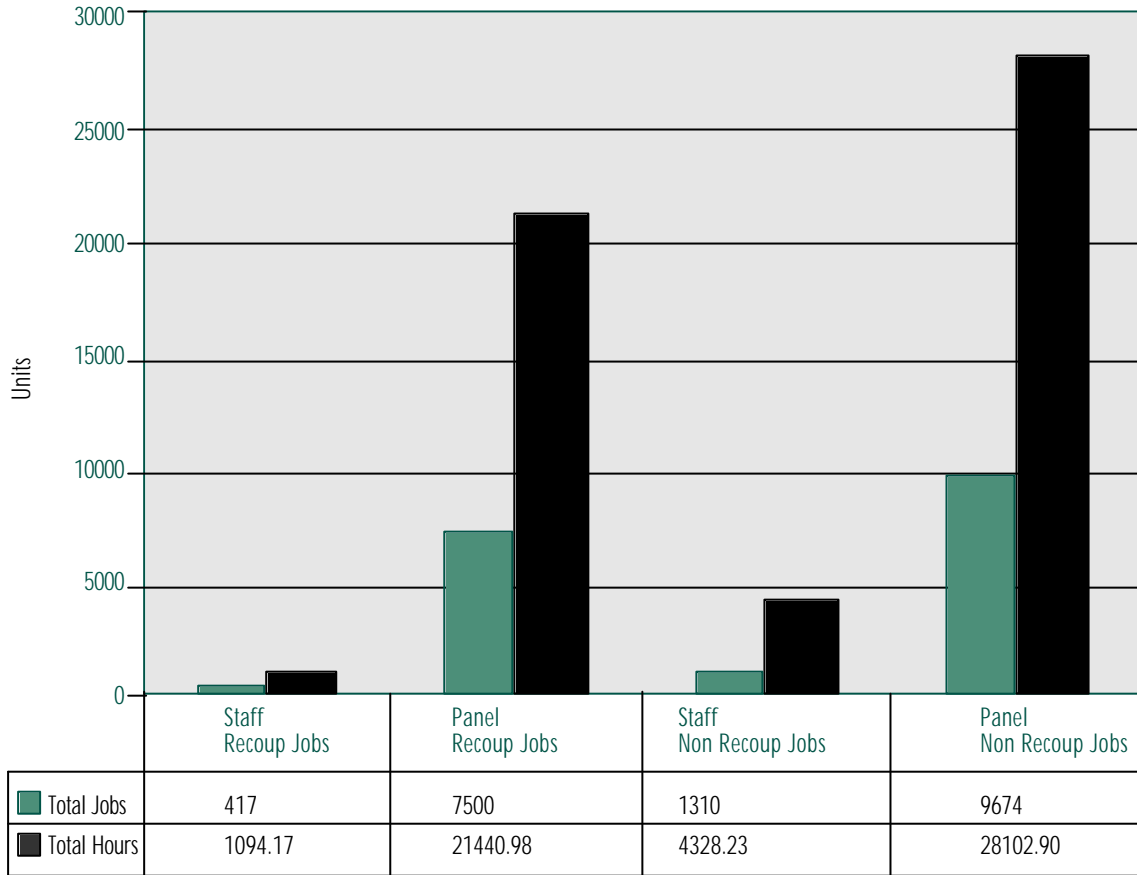
■ Panel Recoup Jobs
■ Staff Recoup Jobs

■ Staff Non Recoup Jobs
■ Panel Non Recoup Jobs



ANALYSIS OF TOTAL ASSIGNMENTS AND HOURS YE 30/6/2001

Direct Labour

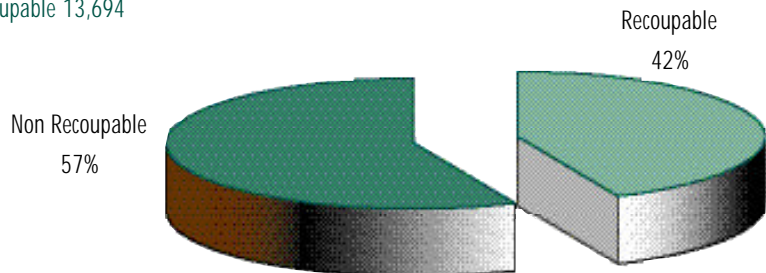


Sales Type to Direct Labour Type

BOOKING ANALYSIS (INCL CANCELLATIONS) YE 30/6/2001

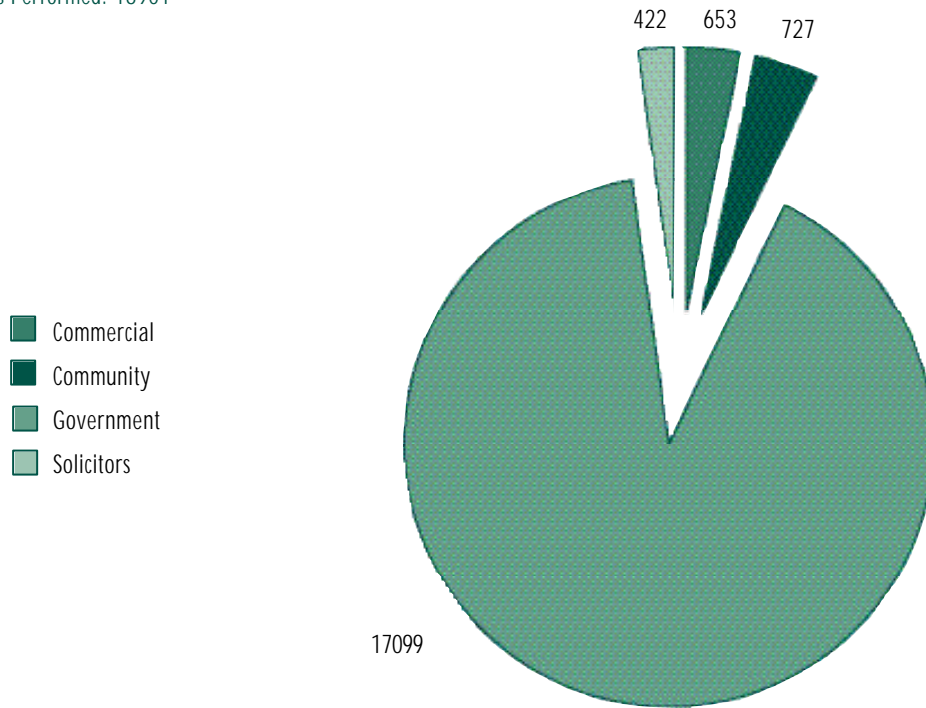
Total Bookings: 24,068

Breakdown: Recoupable 10,374; Non Recoupable 13,694



CUSTOMER MIX - INTERPRETING ASSIGNMENTS YE 30/6/2001

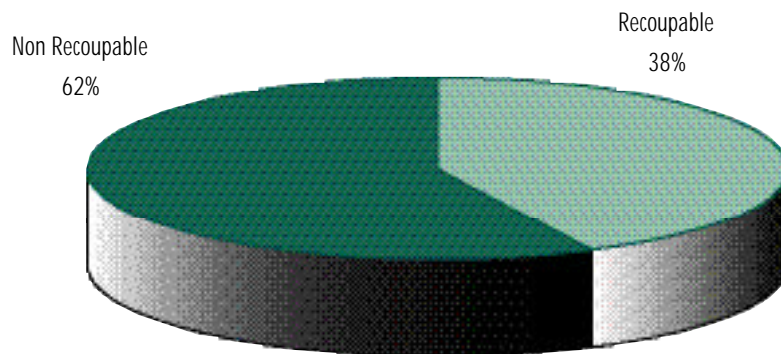
Total Assignments Performed: 18901



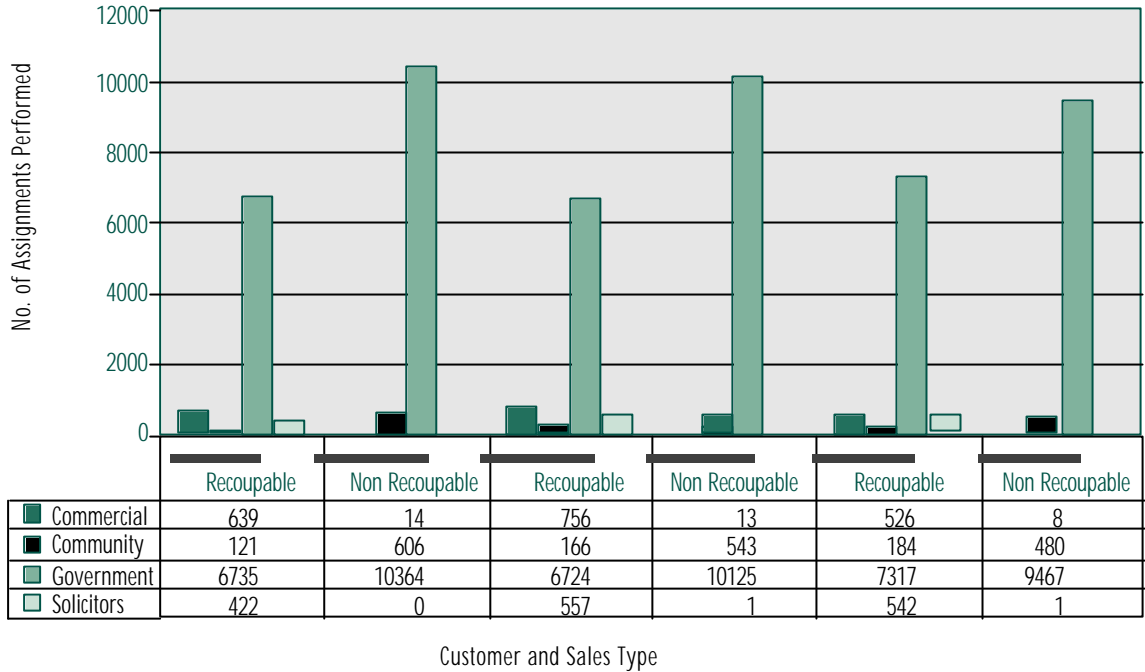
INTERPRETING CANCELLATIONS YE 30/6/2001

Total Cancellations: 4923

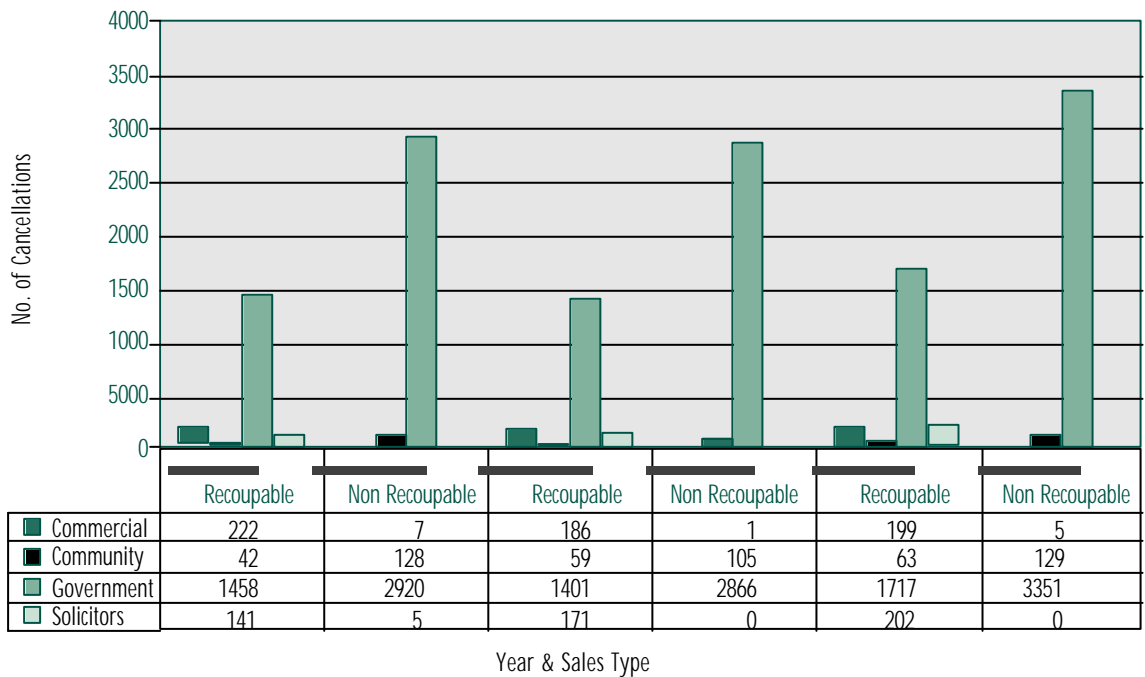
Breakdown: Recoupable 1863; Non Recoupable 3060



3 YEAR COMPARISON OF INTERPRETER ASSIGNMENTS PERFORMED BY CUSTOMER MIX 2000/2001; 1999/2000; 1998/1999



3 YEAR COMPARISON CANCELLATIONS BY CUSTOMER TYPE 2000/2001; 1999/2000; 1998/1999



TRANSLATION ASSIGNMENTS PERFORMED BY NUMBER OF WORDS - EXCLUDING CANCELLATIONS - 3 YEAR ANALYSIS 2000/2001, 1999/2000, 1998/1999

LANGUAGE	NUMBER OF WORDS TRANSLATED			TOTAL RECOUPABLE NUMBER OF WORDS TRANSLATED					
	2000/2001	1999/2000	1998/1999	2000/2001		1999/2000		1998/1999	
				By Staff:	By Panel:	By Staff:	By Panel:	By Staff:	By Panel:
AFRIKAANS	600	0	200	0	600	0	0	0	200
ALBANIAN	600	200	200	0	500	0	200	0	200
AMHARIC	200	300	0	0	200	0	300	0	0
ARABIC	319059	229940	219660	231761	50300	182640	10400	190100	7500
ARMENIAN	3600	1800	1400	0	3100	0	1300	0	1400
ASSYRIAN	0	200	2200	0	0	0	0	0	2200
BENGALI	4300	5600	2600	0	4300	0	5200	0	2300
BOSNIAN	4500	7900	5200	0	4100	0	6800	0	4600
BULGARIAN	6800	3100	4000	0	6500	0	3100	0	3600
BURMESE	8200	12600	9900	0	8200	0	12600	0	9700
CHINESE	328483	307709	211900	278383	29500	236300	13700	195300	7100
CROATIAN	19510	47200	41700	9000	7300	15700	23700	9300	27800
CZECH	10700	8500	6100	0	10300	0	7900	0	6100
DANISH	4063	3600	2100	0	4063	0	2700	0	2100
DARI	11700	1000	300	0	11500	0	1000	0	300
DUTCH	25100	10200	16200	0	24600	0	9700	0	16200
ESTONIAN	100	100	800	0	100	0	100	0	800
FIJIAN	1500	600	700	0	900	0	600	0	600
FILIPINO	2620	10700	5900	0	2620	0	9900	0	5100
FINNISH	1900	1800	700	0	600	0	1800	0	700
FRENCH	54200	55300	43800	0	51200	0	50900	0	42100
GERMAN	84585	69400	67000	0	80985	0	67300	0	64500
GREEK	60900	100600	82200	0	53700	0	84300	0	68800
HEBREW	3400	4400	4400	0	3200	0	3800	0	4400
HINDI	9200	9200	5400	0	8800	0	7800	0	5200
HUNGARIAN	10400	22800	14300	0	9000	0	22500	0	13100
ICELANDIC	0	0	100	0	0	0	0	0	100
INDONESIAN	60300	79500	88900	0	59900	0	77500	0	88600
ITALIAN	96340	92400	66300	0	77200	0	77400	0	60900
JAPANESE	75300	54600	38500	0	74900	0	53100	0	37600
KHMER	13000	12500	22500	0	12500	0	11900	0	21600
KOREAN	181200	171041	151200	0	177200	0	165741	0	144700
KURDISH	1200	1000	600	0	1200	0	800	0	500
LAO	2700	8800	14100	0	2400	0	8100	0	12000
LATVIAN	700	600	500	0	700	0	500	0	500
MACEDONIAN	22600	42300	44800	13600	6500	30900	5200	32100	9400
MALAYSIAN	23000	17600	12700	0	22800	0	16700	0	12300
MALTESE	4700	3500	2200	0	4700	0	2100	0	2200
MANDARIN	300	0	0	0	300	0	0	0	0
NORWEGIAN	2000	1800	2000	0	2000	0	1800	0	2000
PERSIAN	25900	17200	21700	0	24300	0	13900	0	19400
POLISH	30300	42200	31600	0	27800	0	38300	0	28100



TOTAL NON RECOUPABLE NUMBER OF WORDS TRANSLATED					
2000/2001		1999/2000		1998/1999	
By Staff:	By Panel:	By Staff:	By Panel:	By Staff:	By Panel:
0	0	0	0	0	0
0	100	0	0	0	0
0	0	0	0	0	0
28398	8600	31500	5400	18360	3700
0	500	0	500	0	0
0	0	0	200	0	0
0	0	0	400	0	300
0	400	0	1100	0	600
0	300	0	0	0	400
0	0	0	0	0	200
18000	2600	19400	38309	9300	200
1510	1700	1500	6300	1500	3100
0	400	0	600	0	0
0	0	0	900	0	0
0	200	0	0	0	0
0	500	0	500	0	0
0	0	0	0	0	0
0	600	0	0	0	100
0	0	0	800	0	800
0	1300	0	0	0	0
0	3000	0	4400	0	1700
0	3600	0	2100	0	2500
0	7200	0	16300	0	13400
0	200	0	600	0	0
0	400	0	1400	0	200
0	1400	0	300	0	1200
0	0	0	0	0	0
0	400	0	2000	0	300
0	19140	0	15000	0	5400
0	400	0	1500	0	900
0	500	0	600	0	900
0	4000	0	5300	0	6500
0	0	0	200	0	100
0	300	0	700	0	2100
0	0	0	100	0	0
1600	900	6200	0	2800	500
0	200	0	900	0	400
0	0	0	1400	0	0
0	0	0	0	0	0
0	0	0	0	0	0
0	1600	0	3300	0	2300
0	2500	0	3900	0	3500



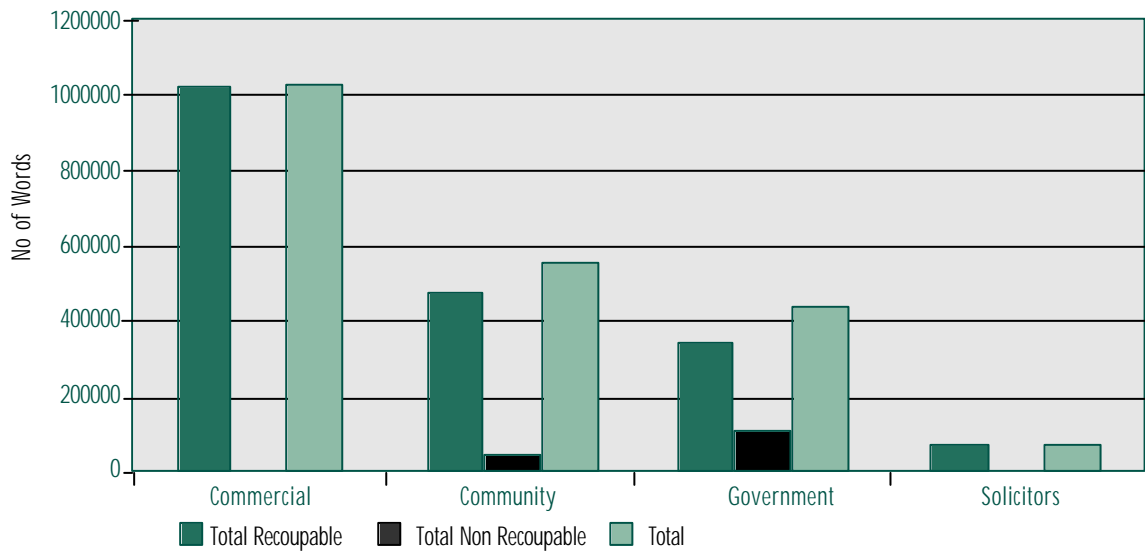
TRANSLATION ASSIGNMENTS PERFORMED BY NUMBER OF WORDS - EXCLUDING CANCELLATIONS - 3 YEAR ANALYSIS 2000/2001, 1999/2000, 1998/1999

LANGUAGE	NUMBER OF WORDS TRANSLATED			TOTAL RECOUPABLE NUMBER OF WORDS TRANSLATED					
	2000/2001	1999/2000	1998/1999	2000/2001		1999/2000		1998/1999	
				By Staff:	By Panel:	By Staff:	By Panel:	By Staff:	By Panel:
PORTUGUESE	53700	60700	50800	0	52900	0	50100	0	47800
PUNJABI	4600	5000	2500	0	4600	0	4800	0	2400
PUSHTO	2900	700	700	0	2700	0	300	0	700
ROMANIAN	8400	6500	10000	0	8300	0	5800	0	9800
RUSSIAN	60350	42700	45000	0	58050	0	38100	0	41100
SAMOAN	1700	700	3100	0	1700	0	700	0	3100
SERBIAN	33357	54800	50400	23726	6431	40200	5800	29700	12900
SINHALESE	2600	3500	2000	0	2600	0	3300	0	1900
SLOVAK	9100	13700	7100	0	8600	0	13400	0	7000
SLOVENE	1300	2000	1700	0	1200	0	2000	0	1700
SOMALI	500	800	0	0	500	0	800	0	0
SPANISH	189493	189900	154700	156493	12500	167800	1800	133200	5100
SWEDISH	7300	4300	6100	0	7200	0	4300	0	6100
TAMIL	2100	900	1700	0	2100	0	700	0	1600
THAI	41700	33800	36500	0	41200	0	32600	0	35500
TONGAN	400	500	1800	0	400	0	500	0	1800
TURKISH	44393	59700	49900	0	39600	0	52600	0	41300
UKRANIAN	11600	9800	7300	0	11600	0	9500	0	7100
URDU	10700	6400	4100	0	9400	0	6200	0	4000
VIETNAMESE	66074	90800	89600	41674	13100	60600	16700	75100	6900



TOTAL NON RECOUPABLE NUMBER OF WORDS TRANSLATED					
2000/2001		1999/2000		1998/1999	
By Staff:	By Panel:	By Staff:	By Panel:	By Staff:	By Panel:
0	800	0	10600	0	3000
0	0	0	200	0	100
0	200	0	400	0	0
0	100	0	700	0	200
0	2300	0	4600	0	3900
0	0	0	0	0	0
2900	300	7200	1600	3600	4200
0	0	0	200	0	100
0	500	0	300	0	100
0	100	0	0	0	0
0	0	0	0	0	0
18600	1900	18800	1500	16200	200
0	100	0	0	0	0
0	0	0	200	0	100
0	500	0	1200	0	1000
0	0	0	0	0	0
0	4793	0	7100	0	8600
0	0	0	300	0	200
0	1300	0	200	0	100
3500	7800	10200	3300	7000	600

TRANSLATION BOOKINGS BASED ON SALES CATEGORY BY CLIENT TYPE (EXCLUDING CANCELLATIONS) 2000/2001
 Total No Translated Words



TRANSLATION ASSIGNMENTS PERFORMED EXCLUDING CANCELLATIONS - 3 YEAR ANALYSIS 2000/2001; 1999/2000; 1998/99

LANGUAGE	TOTAL ASSIGNMENTS PERFORMED			TOTAL RECOUPABLE ASSIGNMENTS			TOTAL NON RECOUPABLE ASSIGNMENTS		
	2000/2001	1999/2000	1998/1999	2000/2001	1999/2000	1998/1999	2000/2001	1999/2000	1998/99
AFRIKAANS	3	0	2	3	0	2	0	0	0
ALBANIAN	6	2	2	5	2	2	1	0	0
AMHARIC	2	3	0	2	3	0	0	0	0
ARABIC	2293	1394	1159	2175	1278	1056	118	116	103
ARMENIAN	10	8	10	8	6	10	2	2	0
ASSYRIAN	0	1	2	0	0	2	0	1	0
BENGALI	34	34	24	34	31	21	0	3	3
BOSNIAN	34	52	27	30	42	23	4	10	4
BULGARIAN	36	20	29	33	20	28	3	0	1
BURMESE	70	80	73	70	80	71	0	0	2
CHINESE	1913	1549	1288	1862	1434	1230	51	115	58
CROATIAN	130	178	173	115	153	151	15	25	22
CZECH	79	57	37	75	54	37	4	3	0
DANISH	38	27	19	38	23	19	0	4	0
DARI	89	10	3	87	10	3	2	0	0
DUTCH	123	65	112	120	61	112	3	4	0
ESTONIAN	1	1	8	1	1	8	0	0	0
FIJIAN	2	1	4	1	1	3	1	0	1
FILIPINO	13	29	16	13	27	13	0	2	3
FINNISH	4	16	7	2	16	7	2	0	0
FRENCH	351	337	297	342	323	287	9	14	10
GERMAN	497	463	390	476	451	377	21	12	13
GREEK	280	392	366	252	344	324	28	48	42
HEBREW	25	33	27	23	28	27	2	5	0
HINDI	47	48	39	44	44	37	3	4	2
HUNGARIAN	77	79	60	72	77	57	5	2	3
ICELANDIC	0	0	1	0	0	1	0	0	0
INDONESIAN	512	590	688	509	580	685	3	10	3
ITALIAN	481	418	424	442	378	398	39	40	26
JAPANESE	538	342	285	534	336	280	4	6	5
KHMER	81	71	73	78	68	69	3	3	4
KOREAN	1624	1371	1279	1608	1352	1250	16	19	29
KURDISH	6	3	3	6	2	2	0	1	1
LAO	18	25	34	17	21	29	1	4	5
LATVIAN	6	5	3	6	4	3	0	1	0
MACEDONIAN	146	158	221	128	135	194	18	23	27
MALAYSIAN	218	160	117	216	153	113	2	7	4
MALTESE	6	9	7	6	5	7	0	4	0



LANGUAGE	TOTAL ASSIGNMENTS PERFORMED			TOTAL RECOUPABLE ASSIGNMENTS			TOTAL NON RECOUPABLE ASSIGNMENTS		
	2000/2001	1999/2000	1998/1999	2000/2001	1999/2000	1998/1999	2000/2001	1999/2000	1998/1999
MANDARIN	3	0	0	3	0	0	0	0	0
NORWEGIAN	14	13	15	14	13	15	0	0	0
PERSIAN	203	128	137	189	107	122	14	21	15
POLISH	192	223	187	177	206	167	15	17	20
<i>PORTUGUESE</i>	407	364	293	401	337	275	6	27	18
PUNJABI	26	21	10	26	20	9	0	1	1
PUSHTO	25	7	7	23	3	7	2	4	0
ROMANIAN	56	41	53	55	36	51	1	5	2
<i>RUSSIAN</i>	375	230	263	363	210	241	12	20	22
SAMOAN	3	1	6	3	1	6	0	0	0
SERBIAN	200	280	260	178	238	215	22	42	45
SINHALESE	18	22	15	18	21	14	0	1	1
SLOVAK	71	105	53	68	103	52	3	2	1
SLOVENE	10	18	9	9	18	9	1	0	0
SOMALI	2	2	0	2	2	0	0	0	0
<i>SPANISH</i>	1018	893	858	939	818	769	79	75	89
SWEDISH	47	31	45	46	31	45	1	0	0
TAMIL	9	8	12	9	7	11	0	1	1
THAI	323	259	216	320	252	211	3	7	5
TONGAN	1	2	6	1	2	6	0	0	0
TURKISH	215	235	224	188	205	190	27	30	34
UKRANIAN	100	77	41	100	74	39	0	3	2
URDU	56	38	25	53	37	24	3	1	1
VIETNAMESE	276	275	302	254	235	274	22	40	28
TOTAL	13443	11304	10346	12872	10519	9690	571	785	656

Italic print indicates the ten most frequently translated languages for the 2000-2001 year.



TRANSLATION SALES MIX BY ASSIGNMENTS (EXCLUDING CANCELLATIONS) - 3 YEAR COMPARISON

Language	Total Assignments Performed			2000/2001				
	200/2001	199/200	198/199	Multilingual Assignments	Standard & Complex Documents	Translated within:		
						24HS	7working Days	14working Days
AFRIKAANS	3	0	2	0	3	0	0	3
ALBANIAN	6	2	2	0	6	0	2	4
AMHARIC	2	3	0	0	2	0	2	0
ARABIC	2293	1394	1159	46	2247	850	612	831
ARMENIAN	10	8	10	1	9	1	3	6
ASSYRIAN		1	2					
BENGALI	34	34	24	0	34	0	22	12
BOSNIAN	34	52	27	2	32	0	12	22
BULGARIAN	36	20	29	0	36	1	15	20
BURMESE	70	80	73	0	70	0	39	31
CHINESE	1913	1549	1288	46	1867	680	568	665
CROATIAN	130	178	173	9	121	8	63	59
CZECH	79	57	37	0	79	1	34	44
DANISH	38	27	19	0	38	0	16	22
DARI	89	10	3	0	89	1	65	23
DUTCH	123	65	112	0	123	0	61	62
ESTONIAN	1	1	8	0	1	0	0	1
FIJIAN	2	1	4	1	1	0	1	1
FILIPINO	13	29	16	0	4	0	0	4
FINNISH	4	16	7	6	7	0	6	7
FRENCH	351	337	297	3	348	10	199	142
GERMAN	497	463	390	3	494	5	242	250
GREEK	280	392	366	27	253	19	130	131
HEBREW	25	33	27	1	24	1	16	8
HINDI	47	48	39	2	45	2	25	20
HUNGARIAN	77	79	60	3	74	1	43	33
ICELANDIC		0	1					
INDONESIAN	512	590	688	5	507	2	283	227
ITALIAN	481	418	424	28	453	30	218	233
JAPANESE	538	342	285	4	534	3	314	221
KHMER	81	71	73	7	74	2	28	51
KOREAN	1624	1371	1279	16	1608	13	917	694
KURDISH	6	3	3	0	6	0	0	6
LAO	18	25	34	2	16	0	12	6
LATVIAN	6	5	3	0	6	0	4	2
MACEDONIAN	146	158	221	5	141	22	44	80
MALAYSIAN	218	160	117	1	217	3	127	88



1999/2000					1998/1999				
Multilingual Assignments	Standard & Complex Documents	Translated within:			Multilingual Assignments	Standard & Complex Documents	Translated within:		
		24 HRS	7 Working Days	14 Working Days			24 HRS	7 Working Days	14 Working Days
0	0	0	0	0	0	2	0	0	2
0	2	0	1	1	0	2	1	0	1
0	3	0	0	3	0	0	0	0	0
63	1331	528	259	607	81	1078	323	210	626
6	2	0	2	6	3	7	1	6	3
1	0	0	0	1	1	1	0	2	0
1	33	1	11	22	1	23	2	9	13
7	45	2	17	33	4	23	0	10	17
0	20	2	7	11	0	29	1	11	17
2	78	0	35	45	0	73	1	25	47
75	1474	458	409	682	72	1216	339	314	635
30	148	28	42	108	32	141	29	37	107
2	55	2	21	34	0	37	0	12	25
0	27	1	11	15	0	19	0	9	10
1	9	0	1	9	0	3	0	2	1
1	64	2	28	35	3	109	1	34	77
0	1	0	1	0	0	8	0	0	8
1	0	0	0	1	1	3	0	2	2
14	15	4	9	16	8	8	3	3	10
0	16	0	9	7	0	7	0	3	4
13	324	19	119	199	6	291	8	107	182
12	451	18	174	271	3	387	3	139	248
46	346	50	131	211	48	318	59	105	202
1	32	1	13	19	0	27	1	11	15
8	40	3	17	28	2	37	3	11	25
5	74	2	28	49	3	57	2	20	38
0	0	0	0	0	0	1	0	1	0
9	581	16	229	345	5	683	10	230	448
41	377	37	152	229	44	380	30	119	275
14	328	6	142	194	8	277	3	115	167
5	66	1	24	46	10	63	4	27	42
27	1344	27	613	731	35	1244	16	498	765
3	0	0	0	3	1	2	0	0	3
4	21	0	10	15	9	25	5	7	22
0	5	1	2	2	0	3	0	0	3
26	132	22	33	103	26	195	33	37	151
2	158	5	83	72	1	116	1	59	57



TRANSLATION SALES MIX BY ASSIGNMENTS (EXCLUDING CANCELLATIONS) - 3 YEAR COMPARISON (Continued)

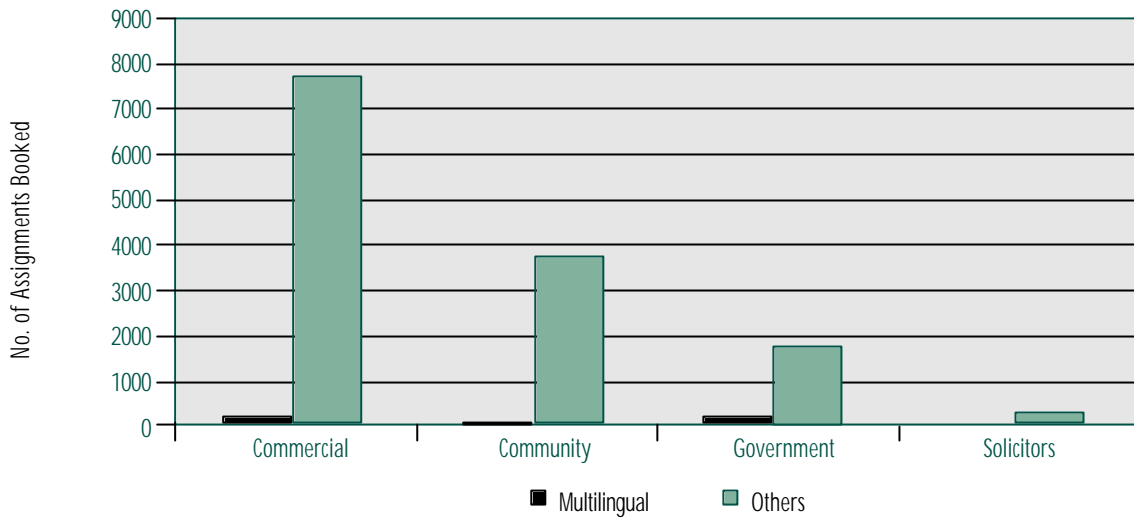
Language	Total Assignments Performed			2000/2001				
	2000/20001	1999/2000	1998/1999	Multilingual Assignments	Standard & Complex Documents	Translated within:		
						24 HRS	7 Working Days	14 Working Days
MALTESE	6	9	7	5	1	1	2	3
MANDARIN	3	0	0	0	3	0	1	2
NORWEGIAN	14	13	15	0	14	0	4	10
PERSIAN	203	128	137	9	194	1	108	94
POLISH	192	223	187	4	188	5	101	86
PORTUGUESE	407	364	293	3	404	8	210	189
PUNJABI	26	21	10	2	24	1	21	4
PUSHTO	25	7	7	1	24	0	10	15
ROMANIAN	56	41	53	0	56	1	33	22
RUSSIAN	375	230	263	7	368	6	193	176
SAMOAN	3	1	6	0	3	0	1	2
SERBIAN	200	280	260	10	190	25	93	82
SINHALESE	18	22	15	0	18	0	10	8
SLOVAK	71	105	53	0	71	1	37	33
SLOVENE	10	18	9	0	10	0	8	2
SOMALI	2	2	0	1	1	0	1	1
SPANISH	1018	893	858	26	992	261	287	470
SWEDISH	47	31	45	0	47	0	21	26
TAMIL	9	8	12	4	5	1	2	6
THAI	323	259	216	6	317	1	172	150
TONGAN	1	2	6	0	1	0	0	1
TURKISH	215	235	224	14	201	8	111	96
UKRANIAN	100	77	41	1	99	0	60	40
URDU	56	38	25	1	55	1	31	24
VIETNAMESE	276	275	302	32	244	33	129	114
TOTAL	13443	11304	10346	344	13099	2009	5769	5665



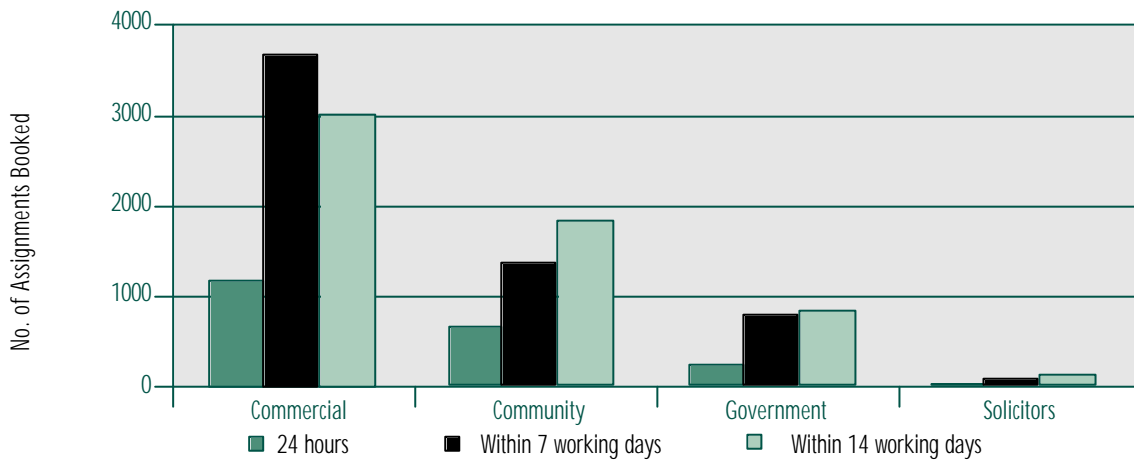
		1999/2000					1998/1999		
Multilingual Assignments	Standard & Complex Documents	Translated within:			Multilingual Assignments	Standard & Complex Documents	Translated within:		
		24 HRS	7 Working Days	14 Working Days			24 HRS	7 Working Days	14 Working Days
8	1	2	1	6	4	3	1	1	5
0	0	0	0	0	0	0	0	0	0
0	13	0	2	11	0	15	1	1	13
5	123	4	38	86	6	131	3	26	108
12	211	8	87	128	10	177	8	63	116
14	350	20	121	223	10	283	11	96	186
3	18	2	5	14	2	8	2	5	3
0	7	0	2	5	0	7	0	2	5
0	41	2	9	30	0	53	0	17	36
15	215	8	66	156	14	249	4	88	171
1	0	0	0	1	3	3	1	0	5
26	254	64	61	155	33	227	65	53	142
1	21	0	13	9	1	14	1	7	7
0	105	0	41	64	0	53	0	23	30
0	18	0	5	13	0	9	0	3	6
1	1	0	0	2	0	0	0	0	0
39	854	213	178	502	50	808	180	145	533
0	31	0	18	13	0	45	0	18	27
2	6	0	5	3	1	11	0	4	8
6	253	5	98	156	6	210	2	79	135
0	2	0	0	2	3	3	0	1	5
18	217	18	74	143	29	195	27	70	127
0	77	0	27	50	0	41	0	8	33
2	36	2	22	14	1	24	2	12	11
54	221	43	78	154	70	232	41	93	168
627	10677	1627	3584	6093	650	9696	1228	2990	6128



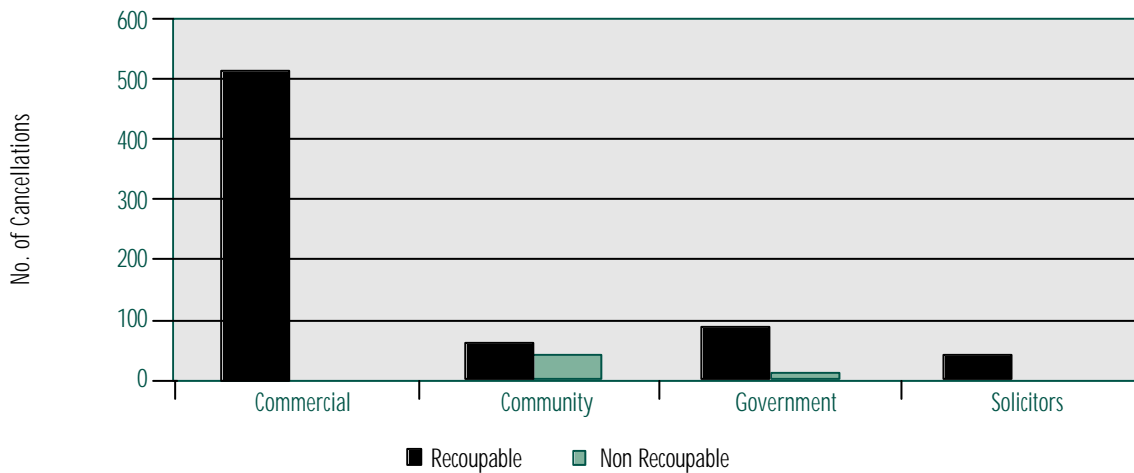
TRANSLATION BOOKINGS BASED ON SALES CATEGORY BY CLIENT TYPE 2000/2001



TRANSLATION BOOKINGS BASED ON SERVICE TYPE AND BY CLIENT TYPE (EXCLUDING CANCELATIONS) 2000/2001



TRANSLATION CANCELLED ASSIGNMENTS BY CLIENT TYPE 2000/2001



TRANSLATION ASSIGNMENT BOOKINGS BY SALES TYPE AND MONTH 2000/2001

